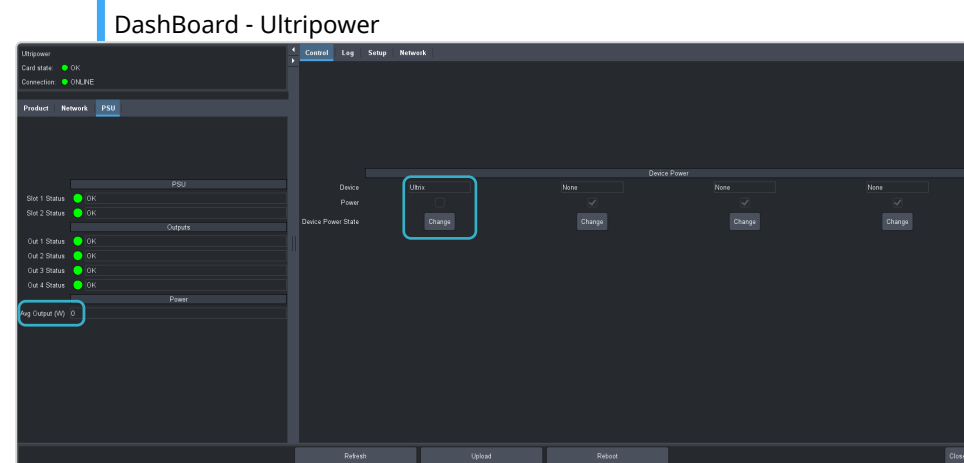
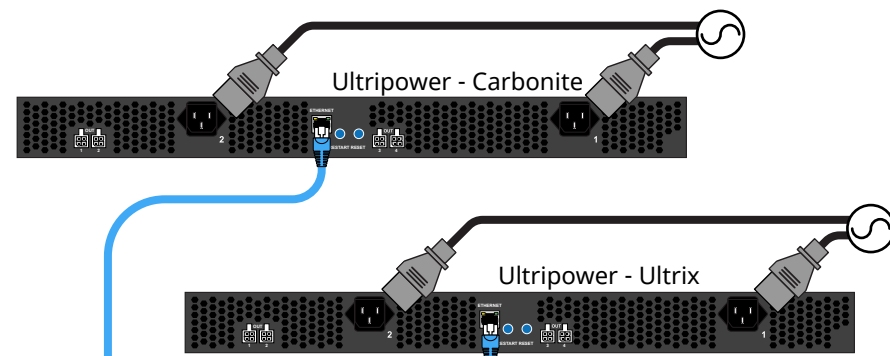




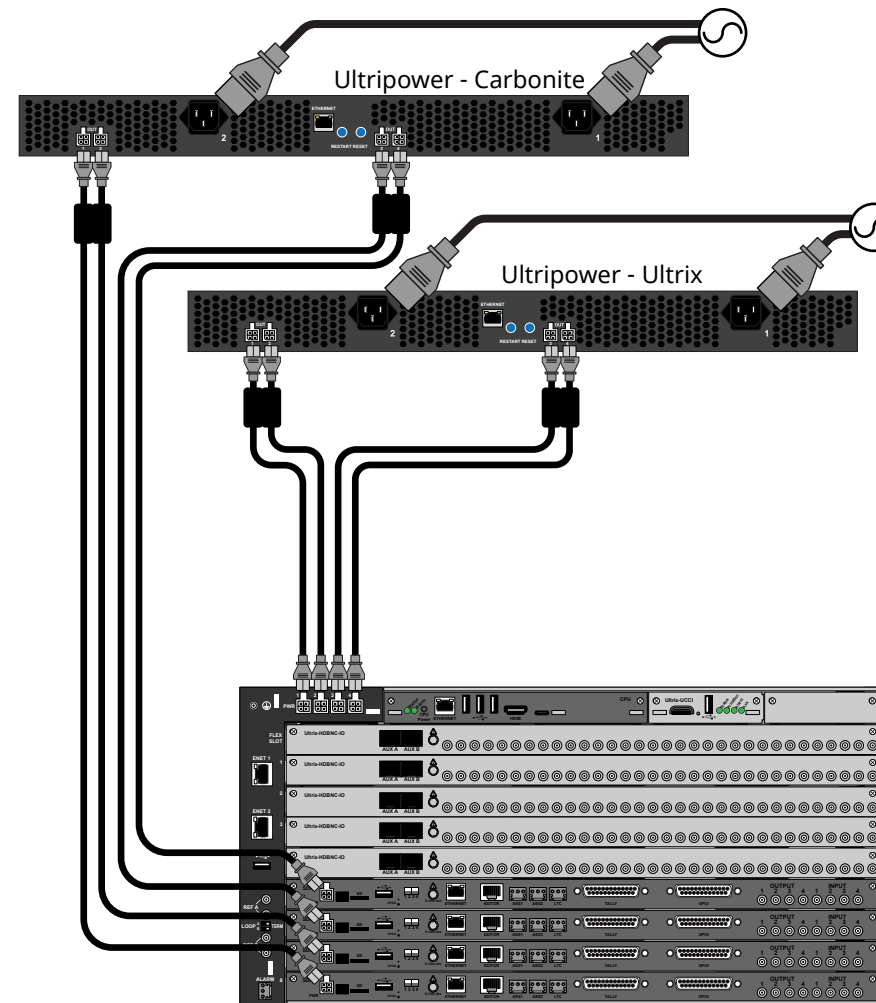
## 1 Ultripower Connection

1. Connect an Ultripower unit to mains power.  
**Important:** Do *NOT* connect them to the SDPE blades.
2. Connect to one of the Ultripower units from DashBoard.
3. Click **Change** in the **Device Power State** to turn the power off.
4. Wait for the **Avg Output (W)** to go to 0.
5. On the **Setup** tab, name the first power supply *Ultrix* and assign all the power supplies to that label.
6. Repeat for the other Ultripower and name it *Carbonite* for each blade.



## 2 Ultrix Carbonite Power Connection

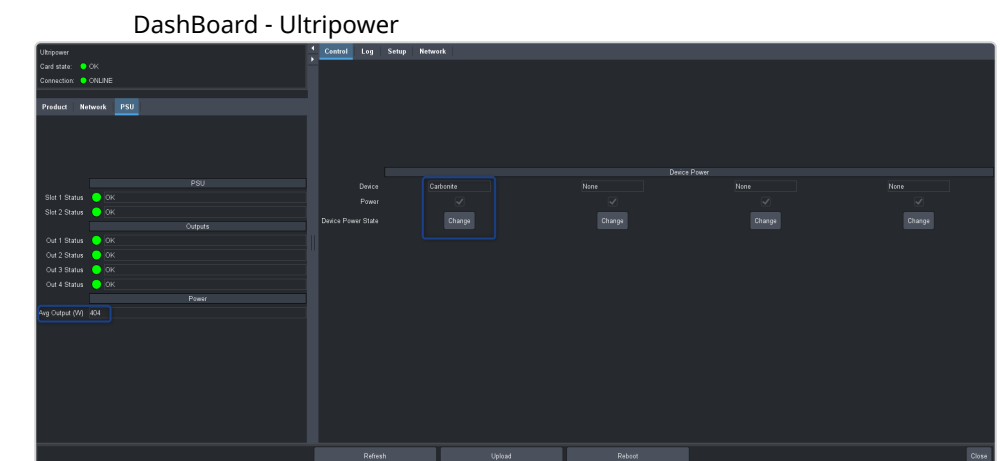
1. Connect the *Ultripower - Carbonite* to the SDPE blades.
  2. Connect the *Ultripower - Ultrix* to the Ultrix.
- Tip:** If your system is small enough that it can be powered by a single Ultripower you do not need to use separate ones for the Ultrix and Carbonite. The entire system can be power on at the same time.



## 3 Ultrix Carbonite Power Up

1. Connect to the *Ultripower - Carbonite* or *Ultrix* in DashBoard.
  2. Click **Change** in the **Device Power State** to turn the power on.
  3. Repeat for the other Ultripower.
  4. The Ultrix Carbonite should be booting up now.
- Important:** Ensure that the Ultrix and SDPE blades are powered up or powered down at roughly the same time. The SDPE blades require the Ultrix for cooling.

**Tip:** On the Ultripower you can connect all four power connections to a single label. This allows you to power on all four connections at the same time.



? Having a problem? Call our free, 24-hour technical support hotline to speak with a live product specialist located right here in our facility.

Tel (North America): 1-844-652-0645  
Tel (International): +800 1005 0100  
Email: techsupport@rossvideo.com

**ROSS**