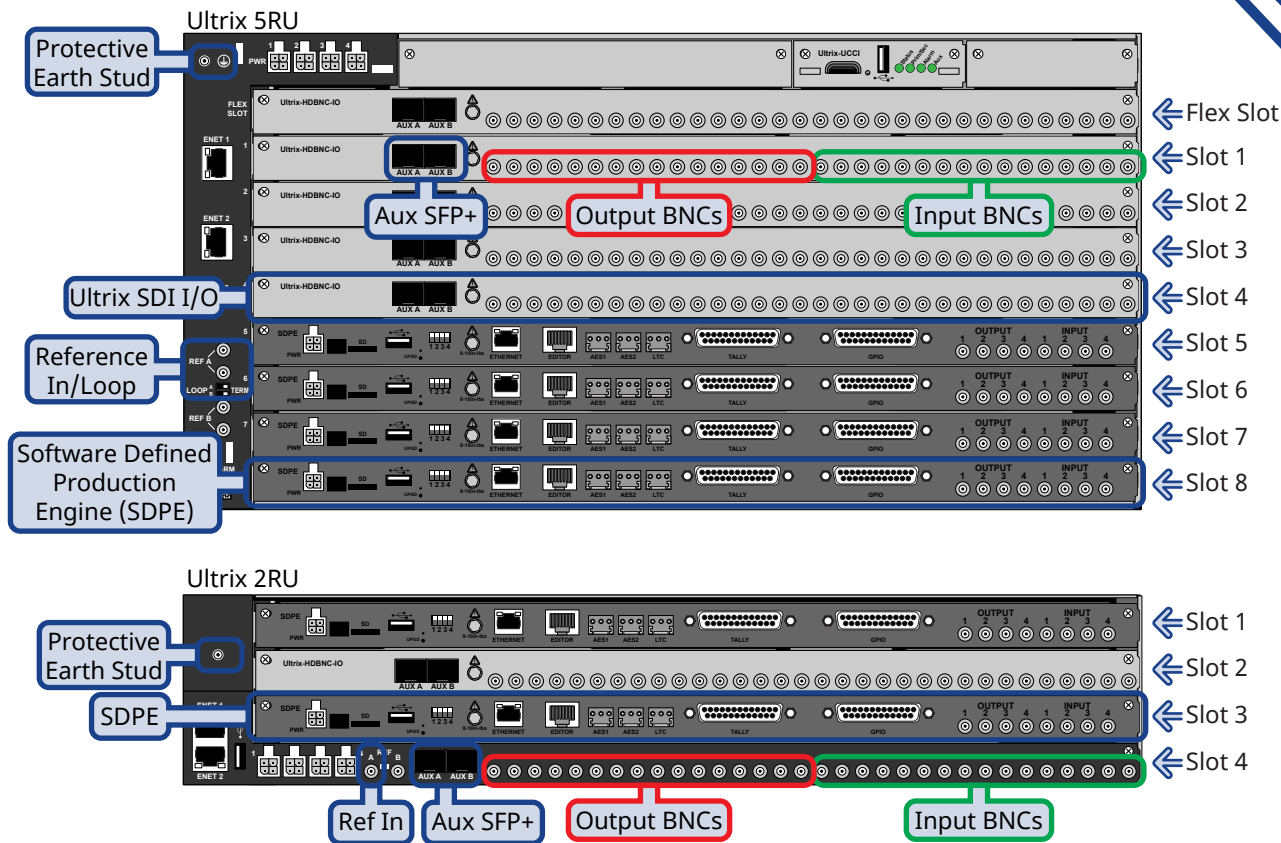


Ultrix 5RU Frame

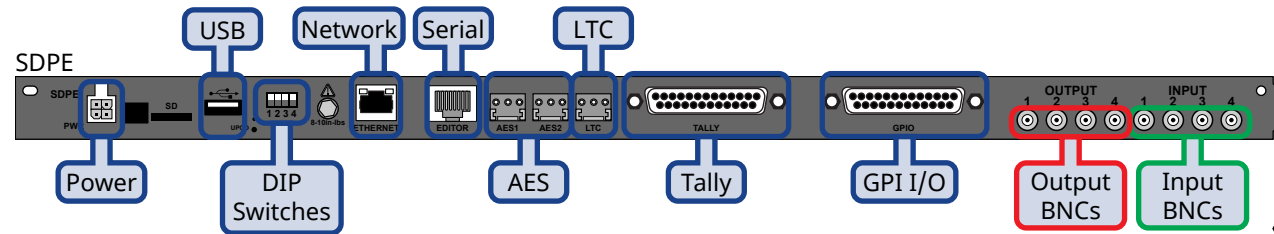
NOTICE Adequate ventilation within a rack frame must be maintained. Ensure side to side ventilation is not compromised. Refer to the Ultrix Installation Guide for more information.

Notes:

- The Ultrix 5RU and 2RU frames support multiple Carbonite switcher platforms at once.
- The switcher uses the Reference input to Ultrix for timing.
- All power supplies must be connected to operate the switcher.
- The input and output BNCs on the SDPE blade are mapped to physical inputs and outputs 19-22 on the switcher.
- Physical sources and destinations on the router must be mapped internally to inputs and outputs on the switcher.
- The Ultrix SDI I/O blade is used to provide sources and destinations that the switcher can access.
- The REF B connection is not supported at this time.
- A 1GbE ethernet connection is required for Ultrix.
- An Ultricool may be required, depending on your installation.
- The Ultra 5RU frame can support up to 4 SDPE blades and the 2RU can support up to 2 SDPE blades.
- The Protective Earth Stud may not be present on all frames.



SDPE (Software Defined Production Engine)



Tally (female DB25)		GPI I/O (female DB25)	
Pin	Tally	Pin	Tally
1	1	1	I/O 1
2	2	2	I/O 2
3	3	3	I/O 3
4	4	4	I/O 4
5	5	5	I/O 5
6	6	6	I/O 6
7	7	7	I/O 7
8	8	8	I/O 8
9	9	9	I/O 9
10	10	10	I/O 10
11	11	11	I/O 11
12	12	24	I/O 12
13	13	25	I/O 13

CAUTION! Electrical shock hazard. The Power connector (PWR) must always be disconnected when the SDPE blade is not installed in the frame.

Notes:

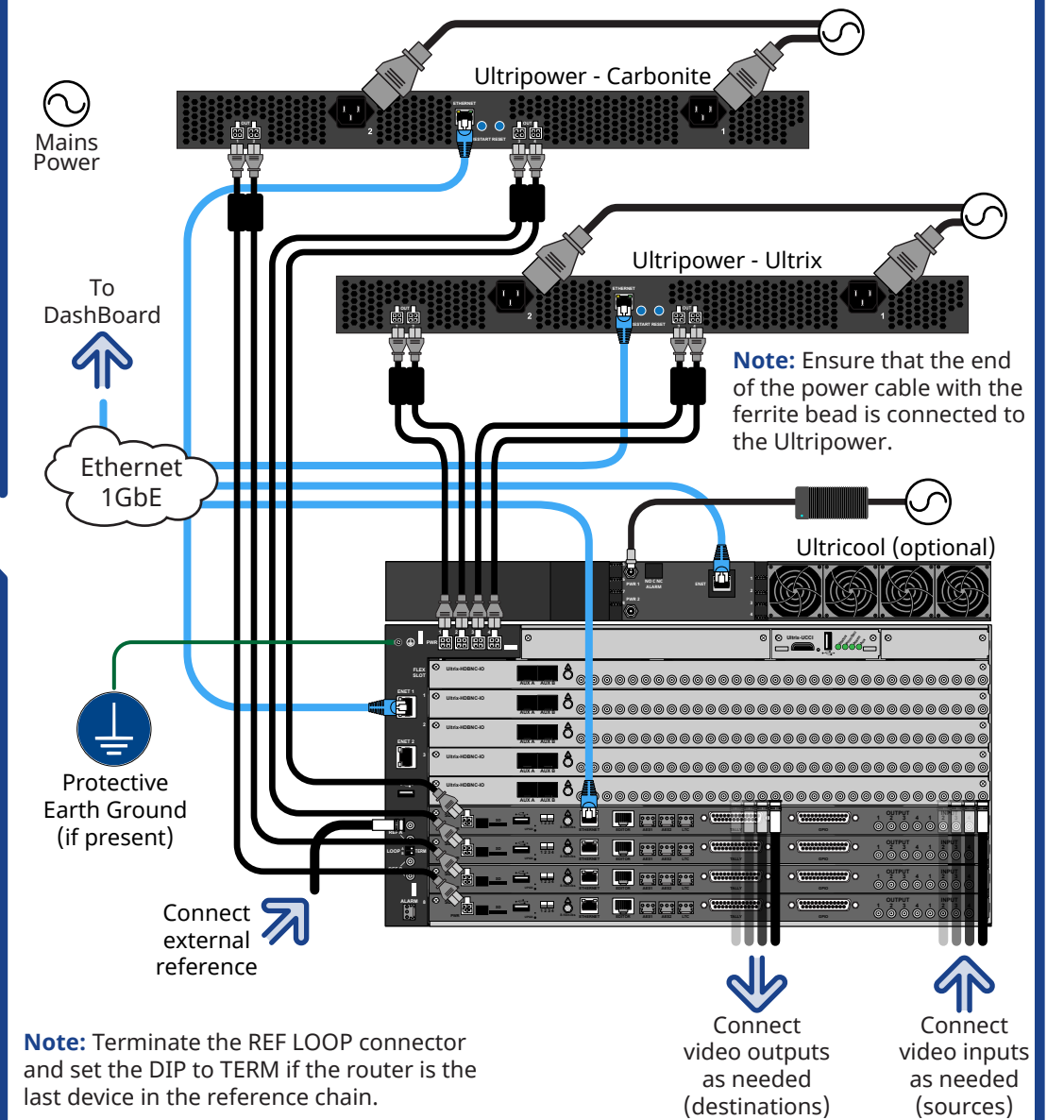
- The switcher is made up of a single SDPE blade. Each SDPE blade provides an independent Carbonite switcher.
- The number of SDPE blades a system can have depends on the size of the Ultrix frame and the other blades that are installed.
- Each SDPE blade is independent of the others. If you upgrade one to a different version of software, that upgrade is not pushed to the other SDPE blades.
- The GPI and Tally ports on each SDPE blade are independent of each other.

Power and Cabling

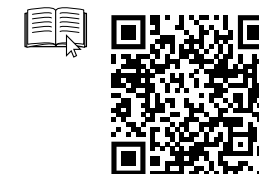
Read the instruction manual for your Ultripower and Ultrix FR5 or Ultrix FR2 before starting work or operating equipment.

CAUTION! Risk of electrical shock. Enclosure shall be connected to earth ground via protective earth stud and 18AWG conductor or larger.

NOTICE The Ultrix frame and SDPE blades do not have power switches. Ensure that the Ultripower is not connected to mains power before connecting the power cables from the Ultripower to the other components. This prevents part of the system from powering up before you are ready.

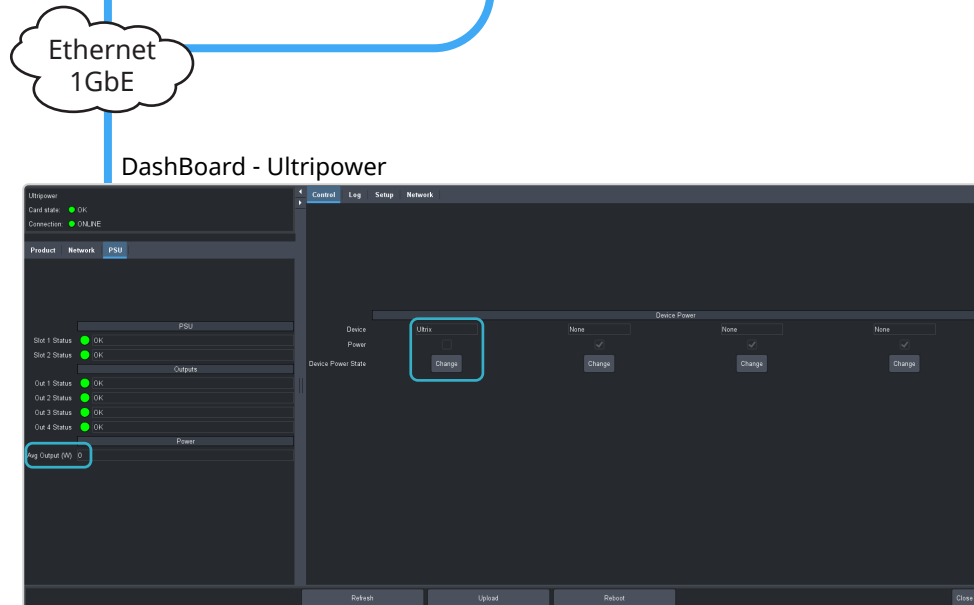
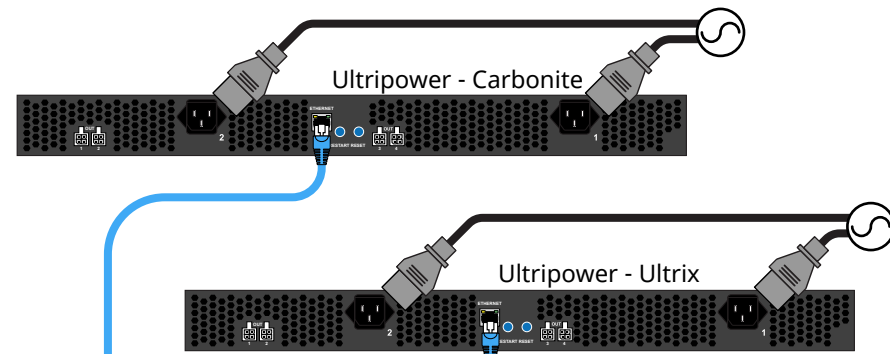


Note: Terminate the REF LOOP connector and set the DIP to TERM if the router is the last device in the reference chain.



1 Ultripower Connection

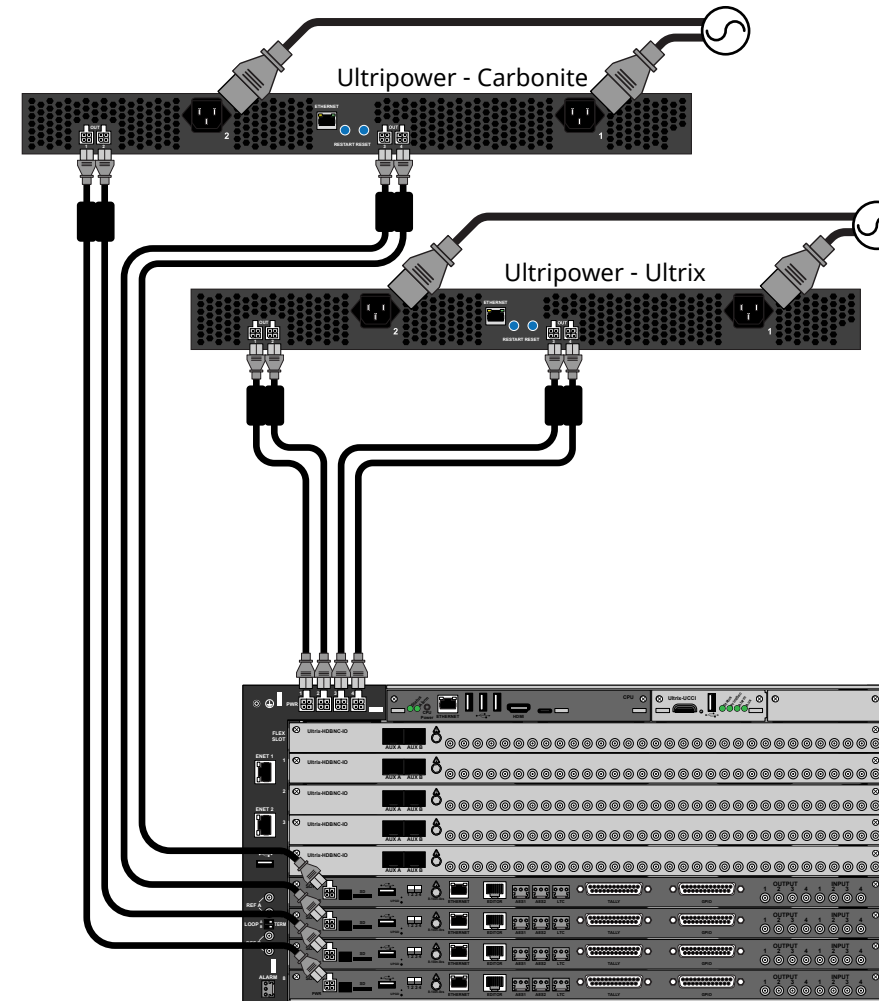
1. Connect an Ultripower unit to mains power.
Important: Do *NOT* connect them to the SDPE blades.
2. Connect to one of the Ultripower units from DashBoard.
3. Click **Change** in the **Device Power State** to turn the power off.
4. Wait for the **Avg Output (W)** to go to 0.
5. On the **Setup** tab, name the first power supply *Ultrinsic* and assign all the power supplies to that label.
6. Repeat for the other Ultripower and name it *Carbonite* for each blade.



2 Ultrinsic Carbonite Power Connection

1. Connect the *Ultripower - Carbonite* to the SDPE blades.
2. Connect the *Ultripower - Ultrinsic* to the Ultrinsic.

Tip: If your system is small enough that it can be powered by a single Ultripower you do not need to use separate ones for the Ultrinsic and Carbonite. The entire system can be power on at the same time.

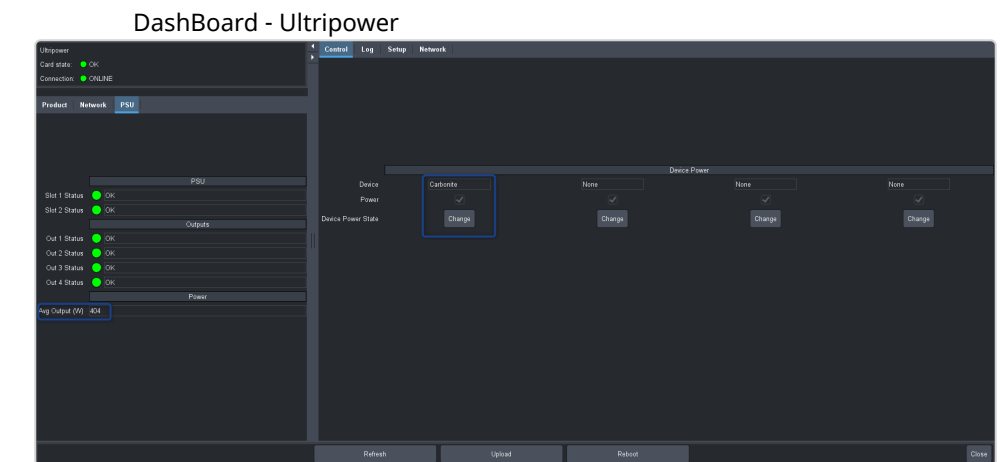


3 Ultrinsic Carbonite Power Up

1. Connect to the *Ultripower - Carbonite* or *Ultrinsic* in DashBoard.
2. Click **Change** in the **Device Power State** to turn the power on.
3. Repeat for the other Ultripower.
4. The Ultrinsic Carbonite should be booting up now.

Important: Ensure that the Ultrinsic and SDPE blades are powered up or powered down at roughly the same time. The SDPE blades require the Ultrinsic for cooling.

Tip: On the Ultripower you can connect all four power connections to a single label. This allows you to power on all four connections at the same time.



? Having a problem? Call our free, 24-hour technical support hotline to speak with a live product specialist located right here in our facility.

Tel (North America): 1-844-652-0645
Tel (International): +800 1005 0100
Email: techsupport@rossvideo.com

